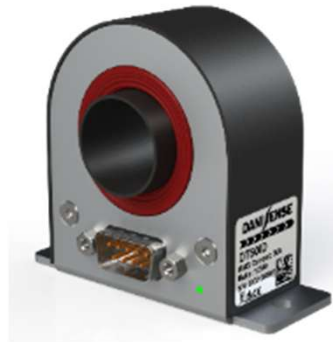


---

# High Accuracy Transducer DT Series



**DANIFENSE**

# Product Range Overview

Output Type	Product Family	Primary Current (Arms)							
		50	200	600	1000	1500	2000	5000	10000
Current	DP series	Red							
	DT Series	Green	Green						
	DC series		Red						
	DS & DQ series	Red	Red	Red					
	DM series					Red			
	DL series						Red		
	DR series							Red	Red
Voltage	DS series	Red	Red	Red	Red				
	DM series					Red			
	DL series					Red	Red		
	DR series				Red	Red	Red	Red	Red



DP series



DT Series



DC series



DQ series



DS series



DM series



DL series



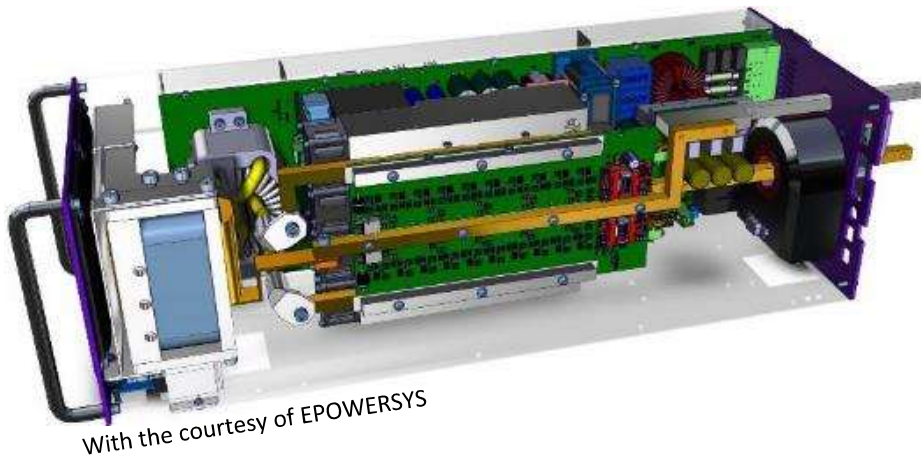
DR series



# DT Series Benefits

## Customer Needs

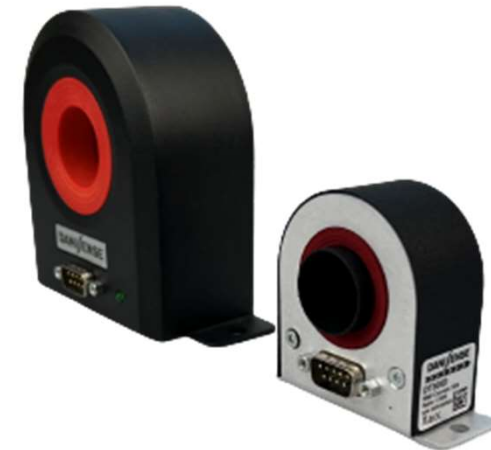
- Design more compact power supply with higher power density



Reduce “total cost of ownership”

## Product features

- Minimize the size: 50% less than existing solution



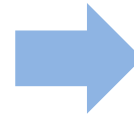
W x H x D = 72mm x 64mm x 35mm

**DANISENSE**

# DT Series Benefits

## Customer Needs

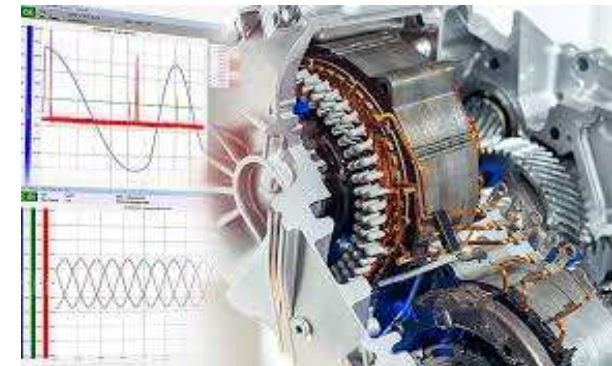
- Compact measuring system for embedded power measurement tests



Make the installation easier and quicker  
to save time

## Product features

- Minimize the size: 50% less than existing solution



W x H x D = 72mm x 64mm x 35mm

**DANISENSE**

# DT Series Benefits

## Customer Needs

- Higher semiconductor switching frequency

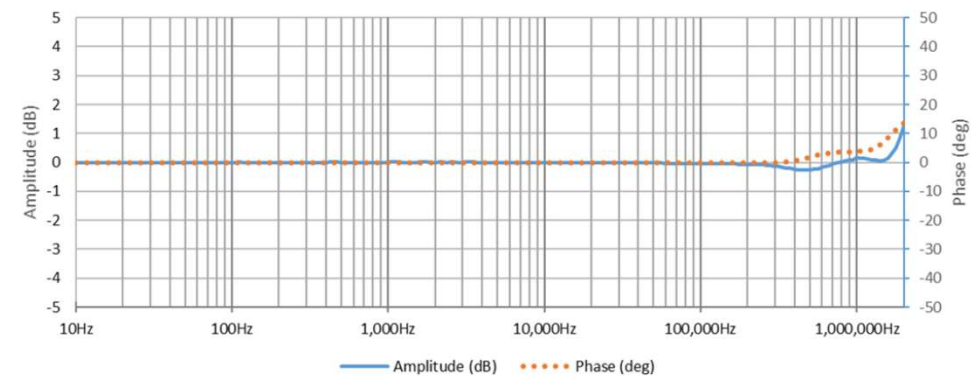


even more challenging  
with SiC and GaN

## Product features

- Very large bandwidth

Typical Amplitude / Phase response



up to 2MHz

**DANISENSE**

# DT Series Benefits

## Customer Needs

- Accurate power measurement



influencing inverter efficiency result

## Product features

- Very high absolute accuracy



linearity +/-2ppm,  
low amplitude and phase shift,  
low temperature drift

**DANISENSE**

# Danisen's Design Advantages

The **most compact** zero flux current transducer without compromise  
on current measurement performances

## Global Accuracy

Linearity 2ppm  
Offset from 20 to 100 ppm  
Offset temp coef +/-0,4ppm/K

## Frequency Response

Large bandwidth (2MHz)  
Small phase & amplitude error

## Small Size

60% less than DS series

## Stability in Time

Offset <1ppm/y



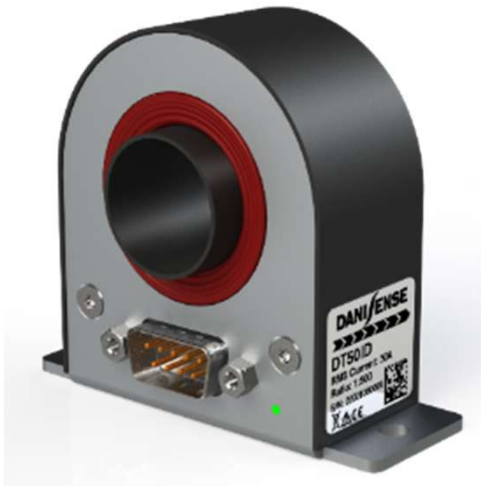
## Mounting

Diameter 20,7mm  
Vertical mounting

**DANISENSE**

# DT Series

---



- Current Range: 50, 100 and 200Arms
- Output: current
- Linearity: <math><1\text{ppm}</math>
- Connectors: DSUB9
- Hole diameter: 20,7mm
- Plastic case

**DANIFENSE**

---

Thank You

**DANI***S***ENSE**